

# Neighbourhood Planning Notice



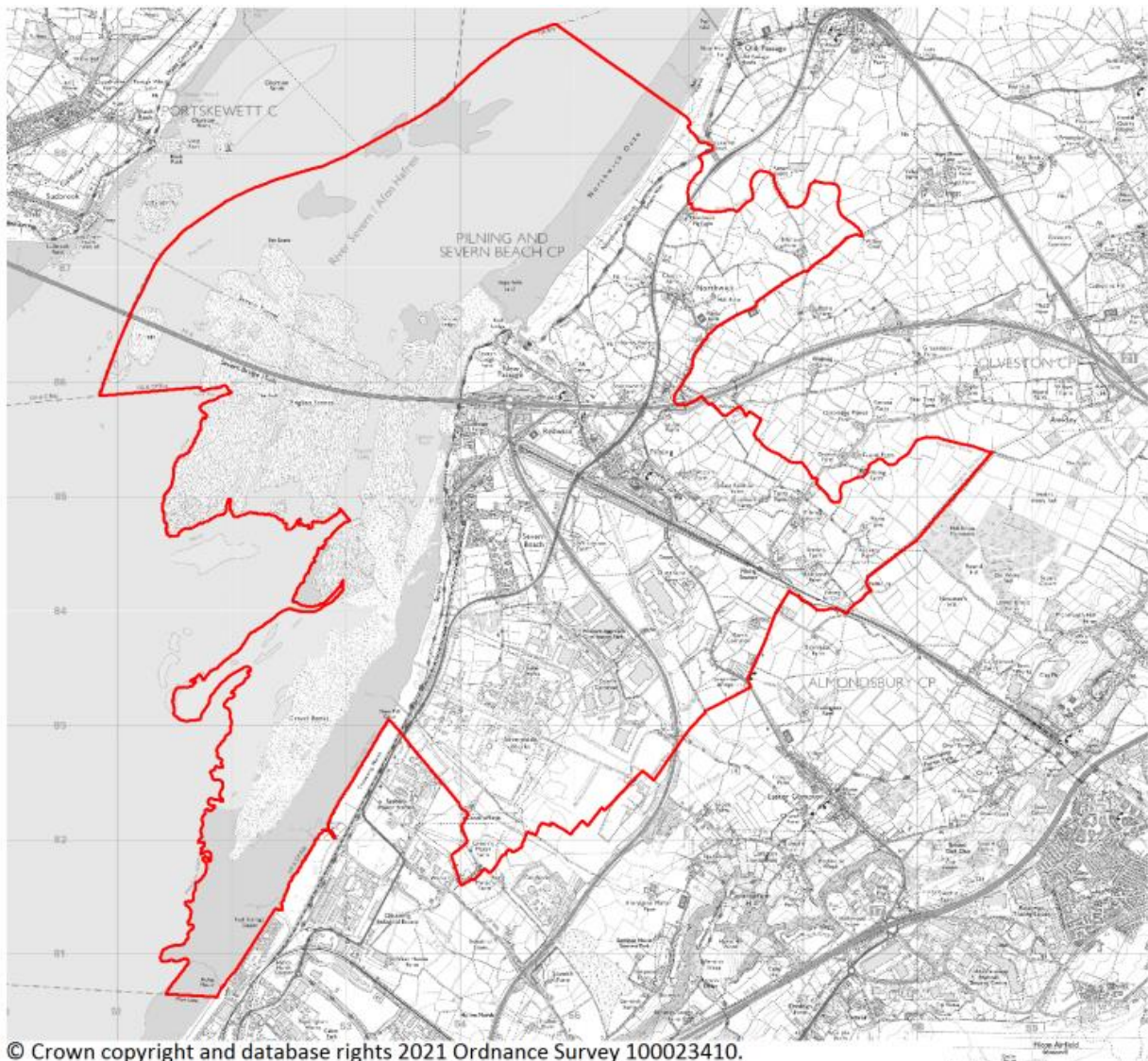
## The Neighbourhood Planning (General) Regulations 2012 (as amended)

South Gloucestershire Council has APPROVED, under Article 5A of the above Regulations, the following neighbourhood area:

**Neighbourhood Plan Area Name:**  
Pilning and Severn Beach Neighbourhood Plan Area

**Relevant body is:**  
Pilning and Severn Beach  
Parish Council

The approved Neighbourhood Plan Area is identified on the map below.



© Crown copyright and database rights 2021 Ordnance Survey 100023410.

Brian Glasson  
Head of Strategic Planning and Housing  
South Gloucestershire Council  
11 January 2021

You can view this document and the map online and find out more about neighbourhood planning at [www.southglos.gov.uk/neighbourhoodplanning](http://www.southglos.gov.uk/neighbourhoodplanning). If you would like further details please contact South Gloucestershire Council Strategic Planning Policy and Specialist Advice Team on 01454 863464.